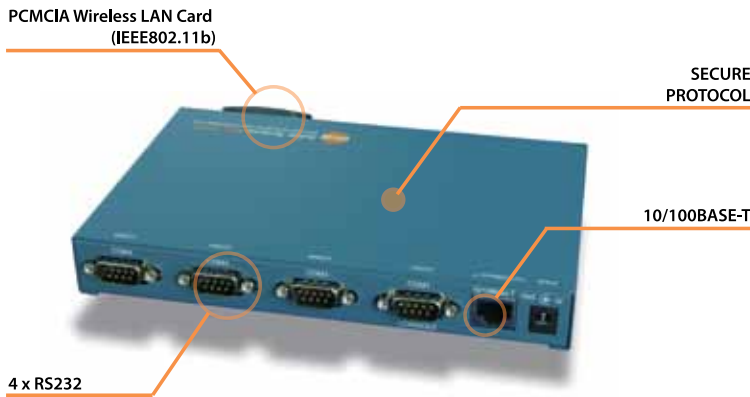


EZL-400S

(4 Port Serial Ethernet Converter)



Highlights

- Remote Monitor and Control serial devices
- 10/100Base-T Ethernet, auto MDI/MDX
- Supports IEEE802.11b : PCMCIA Wireless LAN card interface
- RS232 x 4 (up to 115,200bps, DB9-M interface)
- Powerful security function : SSL3.0/TLS1.0, Password, WEP
- Supports EAP-MD5
- Flexible configuration and network communication by 'AT Commands' (patent)
- Supports communication with variety of TCP/UDP hosts(TCP Server/Client, UDP)
- Supports DHCP and PPPoE for xDSL and cable network
- Easy configuration utility via network for Windows OS (ezConfigMP)
- Virtual COM Port Redirector 'ezVSP' for Windows OS(provided free of charge)
- Firmware is upgradable through network
- Environmentally-friendly RoHS compliant

Overview

EZL-400S is a serial to Ethernet or serial to wireless converter which has four serial ports.

It adds network connectivity to your devices by processing TCP/IP protocol which is required to send and receive data over the Internet.

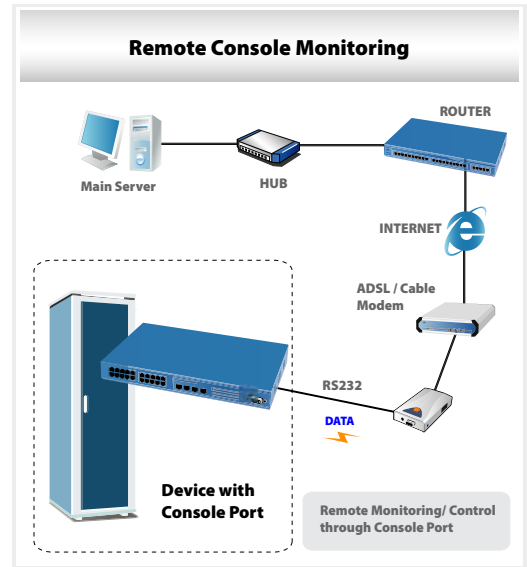
EZL-400S also makes it possible to extend the distance of serial communications without any change of your legacy systems or replace direct serial connection.

This is a simple and easy way to bring the advantages of remote control and management to your serial devices not connected to a network.

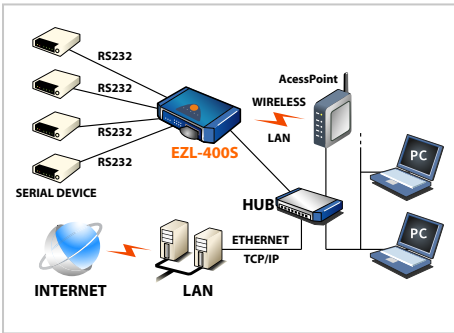
By using EZL-400S, your devices can be remotely controlled, managed and monitored over the Internet.

Additionally, EZL-400S supports secure data communications so that you can use it for secure applications.

Applications



System Diagram



Specifications

*Serial Physical Interface

Serial Interface

4 x RS232 ports
RXD, TXD, RTS, CTS
±15KV ESD Protection

Connector

DB9M DTE Connector

*Serial Port Property

Data Rate

600 bps ~ 115200 bps

Data Bits

5, 6, 7, 8 bits

Parity

None, Even, Odd

Stop Bit

1 or 2

Flow Control

RTS/CTS Hardware

* Network Physical Interface

Ethernet

RJ45 (10Base-T/100Base-TX Ethernet)
Ethernet Speed Auto Sense
1:1 or Cross-over Cable Auto Sense
1000 VAC Isolation

Wireless LAN

3.3V, 16bit PC Card Socket
Intersil PRISM compliant chipset card support
IEEE802.11b, infrastructure/adhoc, WEP

* Software Functions

Protocols

TCP, UDP, IP, ICMP, ARP, Ethernet, IEEE802.11b
EAP, TELNET, TFTP, DHCP, PPPoE, SSL3.0/
TLS1.0,

Security

WEP
SSL (Secure Socket Layer)
Password for Configuring

Communication Mode

TCP server (T2S)
TCP client (COD)
TCP server/client with AT command (ATC)
UDP mode (U2S)

Operating System

MIC RTOS

* Indicators(LEDs)

Power

Red

Link

Ethernet, wireless LAN

Status LED

4 x Status LEDs

Ethernet

RXD, TXD

Serial

4 x RXD, 4 x TXD

* Processors

CPU

ARM7 Core

ROM

256K bits Flash Memory

RAM

2M bits SDRAM

* Management

ezConfigMP

Configuration and Monitoring Tool through Ethernet

Telnet

Telnet Login

AT Command

Configuring in ATC mode

* Supplementary Software

ezConfigMP

Configuration Tool for Windows

ezConfigMP Library

The Library of ezConfigMP for VC++

ezVSP

Serial to Network Virtual Driver for Windows

ezTerm

Simple TCP/IP Communication Test Tool

hotflash

Firmware Upgrade Utility for Windows

* Dimension

Size

136mm x 83mm x 29mm

Body Netweight

about 140g

* Operating Environment

Input Voltage

DC 5±0.5V

Power Consumption

500mA typical

Operating Temperature

0℃ ~ 55℃

* Approvals

CE

F690501/LF-EMC001151

MIC

E-E900-05-4293 (A)

* Emissions

EN55022:1998/A1:2000/A2:2003 (Class A)

EN61000-3-2:2000

EN61000-3-3:1995/A1:2001

EN55024:1998/A1:2001/A2:2003

* Immunity

IEC61000-4-2:1995/A1:1998/A2:2000

IEC61000-4-3:1995/A1:1998/A2:2000

IEC61000-4-4:1995/A1:2000/A2:2001

IEC61000-4-5:1995/A1:2000

IEC61000-4-6:1996/A1:2000

IEC61000-4-11:1994/A1:2000